

[www.taroshimpex.com](http://www.taroshimpex.com)

Contact us :

**Tarosh Impex,** Bhilwara, Rajasthan (INDIA)

**Site Office :**

Bijolia, Bhilwara (RAJ.) PIN: 311602

**Corporate Office :**

Shop No. 2, Community Hall, Subhash Nagar, Bhilwara(RAJ.) PIN: 311001

**Branch Office:**

No. 113, Royal Place, CHS Ltd. Opp Glomax Mall, Sector -01 Plot No. 11,  
Kharghar, Navi Mumbai- 410 210

**Mob : +91-8955483074**



Sand Stones



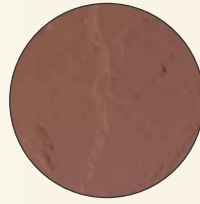
Creates your Ambience...

**Tarosh Impex,** Bhilwara, Rajasthan (INDIA)

## SURFACE FINISHES

### Natural

Natural is the untreated surface which comes by splitting the rocks along the line. The natural cleft makes the surface riven and of undulating texture.



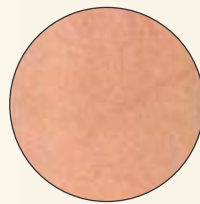
### Sandblasted

This finish makes the surface uniform but textured, giving it a matt look. It is achieved when surface is exposed to pressurize flow of sand and water.



### Sawn

Sawn Surface is done by machine that produces a flat but raw stone. Generally used for gate entries, patios, landscape design applications, and wall panels.



### Polished

Polishing makes stone surface glossy and extremely smooth. This is done by using abrasive and shine comes due to reflection of stone crystals.



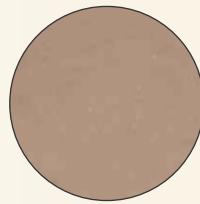
### Brushed

This finish attains by rubbing the stone surface with hard bristle brushes. The surface features a worn-down look and simulates natural wear over time.



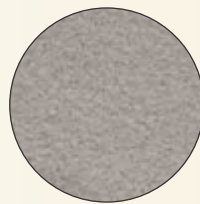
### Honed Finish

A honed surface provides a flat, matte or satin finish creating a more informal and softer look. The finish shows fewer scratches, and requires very little maintenance.



### Flamed

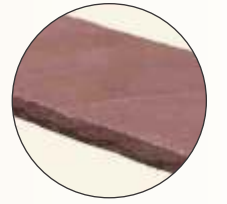
A flamed finish is achieved by heating the surface of the stone to extreme temperatures, followed by rapid cooling. The surface of the stone pops and chips leaving a rough, unrefined texture and making it slip resistant.



## EDGE FINISHES

### Handcut

This edge is cut manually by chisel and hammer giving it a natural look. It is more suitable for landscaping and outdoor areas.



### Chiseled

Chiseling is done by hand on kerbs (making the edge smooth yet natural), blocksteps (straightening the edge) and wallstones (giving the feel of natural rock).



### Tumbled

It gives a smooth edge with natural antique look.



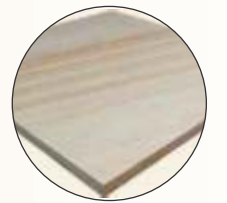
### Chamfered

Chamfering is done by both hand and machine to make an edge angled. It is mainly done on kerbs, blocks, and slabs.



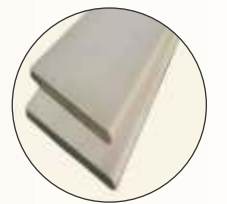
### Sawn

Sawn edge is done by machine that makes it straight and smooth. It is suitable for tiling applications where inter-tile space is minimum.



### Bull Nosed

Bull nosed is done by both machine and hand. It makes the edges rounded and is done on the number of sides which application demand. (steps, table-top, swimming pool etc.)



# Product Overview

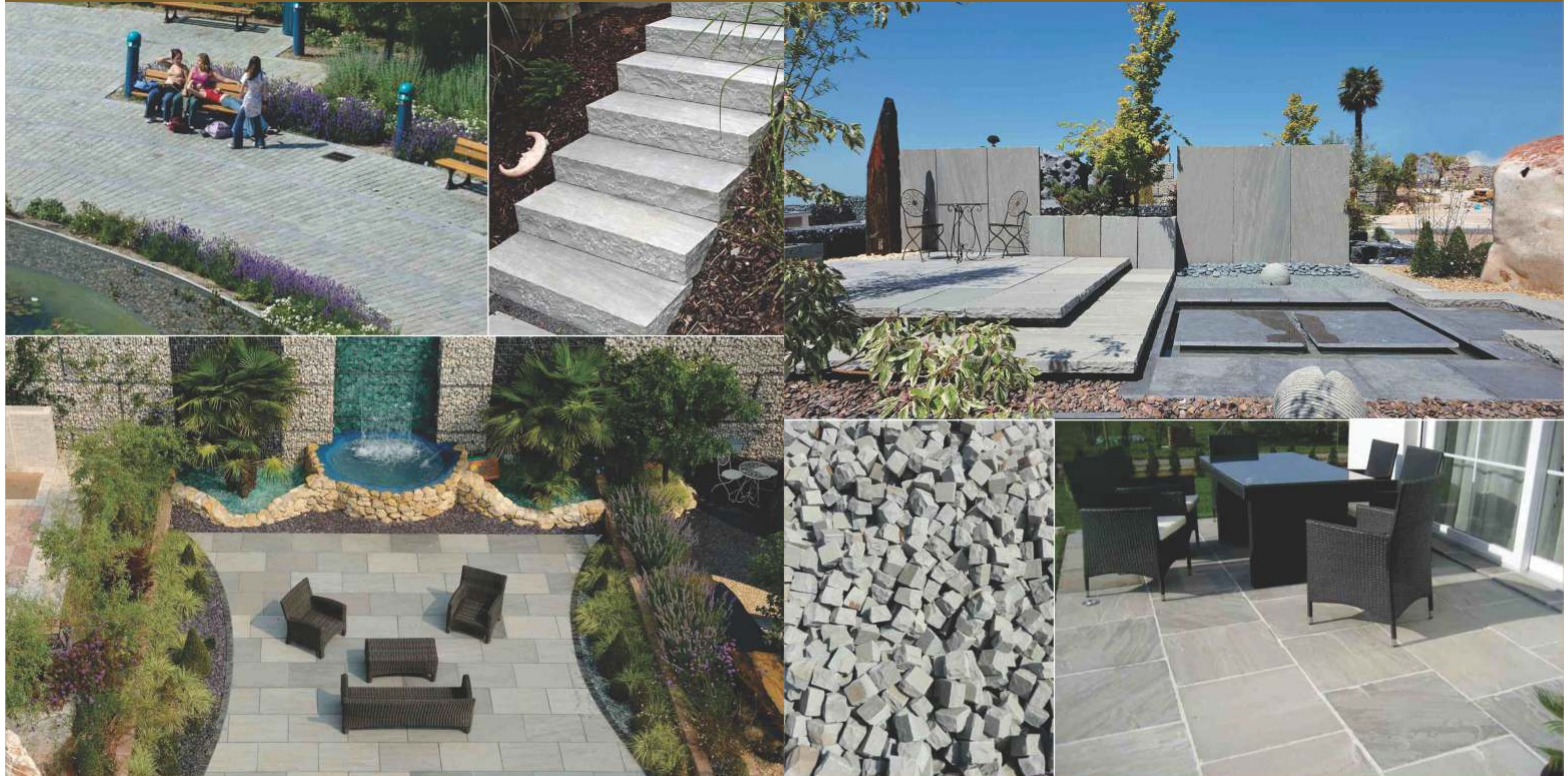
- ◆ **COBBLES**  
loose / crated
- ◆ **SLABS**  
natural surface & edges hand - cut, vein cut, surface sandblasted & bottom calibrated all sides sawn & surface polished surface brushed, flamed, shot blasted & honed tumbled bull nosed, clambering
- ◆ **PALISADES**  
Wallstones
- ◆ **KERBS**  
chamfering by hand or machine
- ◆ **CRAZY PAVING**  
polygonal slabs with 2 - 5 pcs per sqm.
- ◆ **GARDEN / DECORATIVE ARTICLES**



# Kandla Grey

Kandla Grey is a kind of sandstone in which the quartz grains are cemented together by secondary silica calcite. The presence of minor color tonal variations make it a unique and attractive building stone. This type of sandstone are known for its high water absorption ability, least slippery and therefore used in cold countries or that experience rains. Kandla grey is used often in pavements, patios, pathways, wall claddings, and fireplace and in floor tiles and slabs. The tenacity and durability of the stone gives it a whopping popularity. The stone is also resistant to weathering and climatic extremities. The stone is certainly a wise investment. The beauty of Kandla grey is such that it would enthrall generations to come.

more info please log on : [www.taroshimpex.com](http://www.taroshimpex.com)





## Raj Green

The vibrant green surface colour makes this stone useful for outside landscaping as it matches up with the colour of grass and soil thus making a package combination paving. The beauty of the stone coupled with shine and soft look add to the momentum of the ambience. Green keeps the environment active and agile too.

more info please log on : [www.taroshimpex.com](http://www.taroshimpex.com)



## Autumn Brown

This stone is complete replica for concrete tiles having consistency in the colour which becomes predominant in all seasons and specially in rainy season. Autumn Brown or Marson Copper is a rustic, natural sandstone suited for traditional landscape designs. This type of sandstone has strong physical and chemical composition thus being a hard wearing stone which requires minimal maintenance. It is suitable for pathways, driveways, used in the old city revamping projects, making window cills, lintens and kerbs. Shades of Autumn Brown sandstone can be used to create an interesting interiors and exteriors.

more info please log on : [www.taroshimpex.com](http://www.taroshimpex.com)

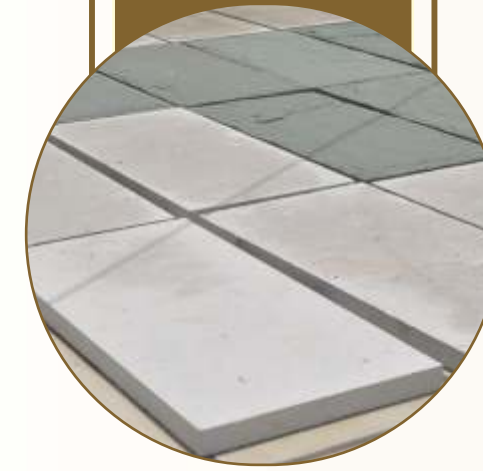




## Ravina

Raveena is one of our more interesting sandstones. Predominantly grey in background colour, it has highly interesting patterns and swirls of pinks and purple, and beautiful bands of colour. It is the ideal choice for small patios as each slab has its own unique characteristics. Likewise though on larger areas, when wet your whole patio will 'come alive' as the patterning is highlighted.

more info please log on : [www.taroshimpex.com](http://www.taroshimpex.com)



## White

The Early to Middle Permian White Rim Sandstone is the continental geologic formation deposited at the time of marine transgressions during the Permian Period. The coeval Toroweap Formation was laid down under marine conditions along the southwest margin of the North American continent and is found in northwest Arizona layered between Coconino Sandstone and the Kaibab Formation. The Toroweap is mostly from the Grand Canyon and just eastwards to Lee's Ferry-(Colorado River, Grand Canyon), south to the Verde Valley region (Sedona, Sycamore Canyon, Oak Creek Canyon), but the Toroweap also occurs within sections in southeast Utah, and also became overlain by the Kaibab Formation, specifically at the Circle Cliffs, west of the Waterpocket Fold.

more info please log on : [www.taroshimpex.com](http://www.taroshimpex.com)





## Yellow

Yellow stone is especially meant for exterior cladding in sea shore buildings due to acid & thermal resistant properties. The saline winds have negligible effect on Yellow stone.

Being lightly riven in appearance this sandstone paving, with its natural variation in colour; gives a truly earthy feel. Sandstone is a sedimentary rock formed from sand size grains and is ideal for both internal and external use. Suitable applications include pathways, driveways, garden patios and public areas. Sandstone paving is hard wearing and provides a natural slip resistance. It is a fine grained beige color sandstone, which bears beautiful pattern by brown veins which luxurious feel

more info please log on : [www.taroshimpex.com](http://www.taroshimpex.com)



## Red or chocolate

This type of sandstone is relatively soft and resistant to all types of acid. This red sandstone is very popular in the buff to brownish; sometimes reddish, due to presence of iron oxides. Chocolate stone is especially useful for exterior cladding and is available in natural, sawn as well as polished surface finishes.

more info please log on : [www.taroshimpex.com](http://www.taroshimpex.com)





## Teakwood

Teak Sandstone It is a fine grained beige color sandstone, which bears beautiful pattern by brown veins which luxurious feel . Teak Wood Sandstone is fine grained dense sandstone with beautiful variation whilst maintaining a blended appearance. It's unique almost wood like veining is simply elegant and beautiful and no two slabs are ever the same giving you a completely unique natural patio every time thus bringing you closer to mother Earth.

more info please log on : [www.taroshimpex.com](http://www.taroshimpex.com)



## Pink

Pink sandstone is a light pink/beige colour with bands of browns, beiges and yellows running through it. This attractive paving is cut from hard wearing sandstone and is therefore durable for both internal and external use. Pink sandstone paving is ideal for modern contemporary designs

more info please log on : [www.taroshimpex.com](http://www.taroshimpex.com)

