

www.taroshimpex.com

Contact us :

Tarosh Impex, Bhilwara, Rajasthan (INDIA)

Site Office :

Bijolia, Bhilwara (RAJ.) PIN: 311602

Corporate Office :

Shop No. 2, Community Hall, Subhash Nagar, Bhilwara(RAJ.) PIN: 311001

Branch Office:

No. 113, Royal Place, CHS Ltd. Opp Glomax Mall, Sector -01 Plot No. 11,
Kharghar, Navi Mumbai- 410 210

Mob : +91-8955483074

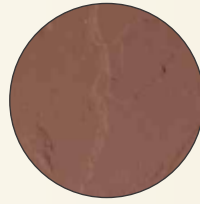


Tarosh Impex, Bhilwara, Rajasthan (INDIA)

SURFACE FINISHES

Natural

Natural is the untreated surface which comes by splitting the rocks along the line. The natural cleft makes the surface riven and of undulating texture.



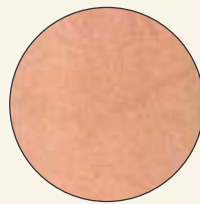
Sandblasted

This finish makes the surface uniform but textured, giving it a matt look. It is achieved when surface is exposed to pressurize flow of sand and water.



Sawn

Sawn Surface is done by machine that produces a flat but raw stone. Generally used for gate entries, patios, landscape design applications, and wall panels.



Polished

Polishing makes stone surface glossy and extremely smooth. This is done by using abrasive and shine comes due to reflection of stone crystals.



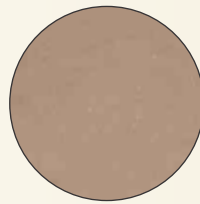
Brushed

This finish attains by rubbing the stone surface with hard bristle brushes. The surface features a worn-down look and simulates natural wear over time.



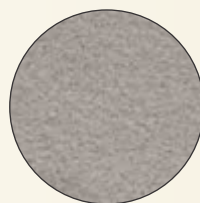
Honed Finish

A honed surface provides a flat, matte or satin finish creating a more informal and softer look. The finish shows fewer scratches, and requires very little maintenance.



Flamed

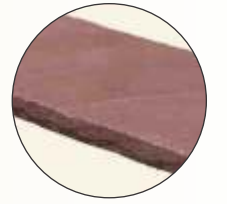
A flamed finish is achieved by heating the surface of the stone to extreme temperatures, followed by rapid cooling. The surface of the stone pops and chips leaving a rough, unrefined texture and making it slip resistant.



EDGE FINISHES

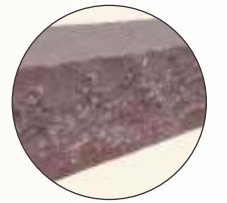
Handcut

This edge is cut manually by chisel and hammer giving it a natural look. It is more suitable for landscaping and outdoor areas.



Chiseled

Chiseling is done by hand on kerbs (making the edge smooth yet natural), blocksteps (straightening the edge) and wallstones (giving the feel of natural rock).



Tumbled

It gives a smooth edge with natural antique look.



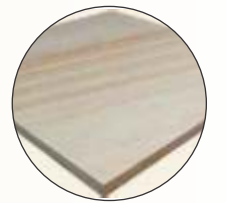
Chamfered

Chamfering is done by both hand and machine to make an edge angled. It is mainly done on kerbs, blocks, and slabs.



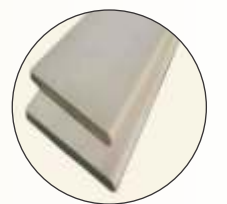
Sawn

Sawn edge is done by machine that makes it straight and smooth. It is suitable for tiling applications where inter-tile space is minimum.



Bull Nosed

Bull nosed is done by both machine and hand. It makes the edges rounded and is done on the number of sides which application demand. (steps, table-top, swimming pool etc.)





Sand Stone

Product Overview

- ◆ COBBLES
loose / crated
- ◆ SLABS
natural surface & edges hand - cut, vein cut, surface sandblasted & bottom calibrated all sides sawn & surface polished surface brushed , flamed , shot blasted & honed tumbled bull nosed , clambering
- ◆ PALISADES
Wallstones
- ◆ KERBS
chamfering by hand or machine
- ◆ CRAZY PAVING
polygonal slabs with 2 - 5 pcs per sqm.
- ◆ GARDEN / DECORATIVE ARTICLES





Kandla Grey

Kandla Grey is a kind of sandstone in which the quartz grains are cemented together by secondary silica calcite. The presence of minor color tonal variations make it a unique and attractive building stone. This type of sandstone are known for its high water absorption ability, least slippery and therefore used in cold countries or that experience rains. Kandla grey is used often in pavements, patios, pathways, wall claddings, and fireplace and in floor tiles and slabs. The tenacity and durability of the stone gives it a whopping popularity. The stone is also resistant to weathering and climatic extremities. The stone is certainly a wise investment. The beauty of Kandla grey is such that it would enthrall generations to come.

more info please log on : www.taroshimpex.com



Raj Green

The vibrant green surface colour makes this stone useful for outside landscaping as it matches up with the colour of grass and soil thus making a package combination paving. The beauty of the stone coupled with shine and soft look add to the momentum of the ambience. Green keeps the environment active and agile too.

more info please log on : www.taroshimpex.com





Autumn Brown

This stone is complete replica for concrete tiles having consistency in the colour which becomes predominant in all seasons and specially in rainy season. Autumn Brown or Marson Copper is a rustic, natural sandstone suited for traditional landscape designs. This type of sandstone has strong physical and chemical composition thus being a hard wearing stone which requires minimal maintenance. It is suitable for pathways, driveways, used in the old city revamping projects, making window cills, lintens and kerbs. Shades of Autumn Brown sandstone can be used to create an interesting interiors and exteriors.

more info please log on : www.taroshimpex.com

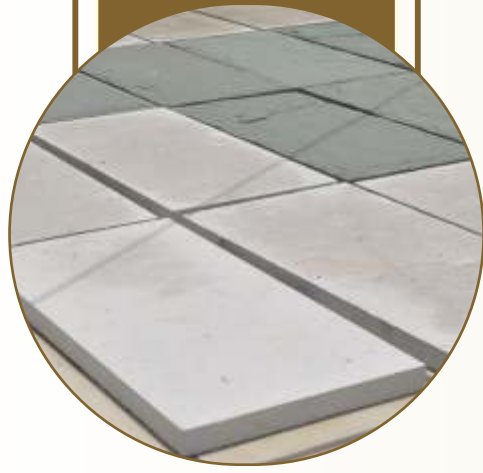


Ravina

Raveena is one of our more interesting sandstones. Predominantly grey in background colour, it has highly interesting patterns and swirls of pinks and purple, and beautiful bands of colour. It is the ideal choice for small patios as each slab has its own unique characteristics. Likewise though on larger areas, when wet your whole patio will 'come alive' as the patterning is highlighted.

more info please log on : www.taroshimpex.com





White

The Early to Middle Permian White Rim Sandstone is the continental geologic formation deposited at the time of marine transgressions during the Permian Period. The coeval Toroweap Formation was laid down under marine conditions along the southwest margin of the North American continent and is found in northwest Arizona layered between Coconino Sandstone and the Kaibab Formation. The Toroweap is mostly from the Grand Canyon and just eastwards to Lee's Ferry-(Colorado River, Grand Canyon), south to the Verde Valley region (Sedona, Sycamore Canyon, Oak Creek Canyon), but the Toroweap also occurs within sections in southeast Utah, and also became overlain by the Kaibab Formation, specifically at the Circle Cliffs, west of the Waterpocket Fold.

more info please log on : www.taroshimpex.com



Yellow

Yellow stone is especially meant for exterior cladding in sea shore buildings due to acid & thermal resistant properties. The saline winds have negligible effect on Yellow stone.

Being lightly riven in appearance this sandstone paving, with its natural variation in colour; gives a truly earthy feel. Sandstone is a sedimentary rock formed from sand size grains and is ideal for both internal and external use. Suitable applications include pathways, driveways, garden patios and public areas. Sandstone paving is hard wearing and provides a natural slip resistance. It is a fine grained beige color sandstone, which bears beautiful pattern by brown veins which luxurious feel

more info please log on : www.taroshimpex.com





Red or chocolate

This type of sandstone is relatively soft and resistant to all types of acid. This red sandstone is very popular in the buff to brownish; sometimes reddish, due to presence of iron oxides. Chocolate stone is especially useful for exterior cladding and is available in natural, sawn as well as polished surface finishes.

more info please log on : www.taroshimpex.com



Teakwood

Teak Sandstone It is a fine grained beige color sandstone, which bears beautiful pattern by brown veins which luxurious feel . Teak Wood Sandstone is fine grained dense sandstone with beautiful variation whilst maintaining a blended appearance. It's unique almost wood like veining is simply elegant and beautiful and no two slabs are ever the same giving you a completely unique natural patio every time thus bringing you closer to mother Earth.

more info please log on : www.taroshimpex.com





Pink

Pink sandstone is a light pink/beige colour with bands of browns, beiges and yellows running through it. This attractive paving is cut from hard wearing sandstone and is therefore durable for both internal and external use. Pink sandstone paving is ideal for modern contemporary designs

more info please log on : www.taroshimpex.com

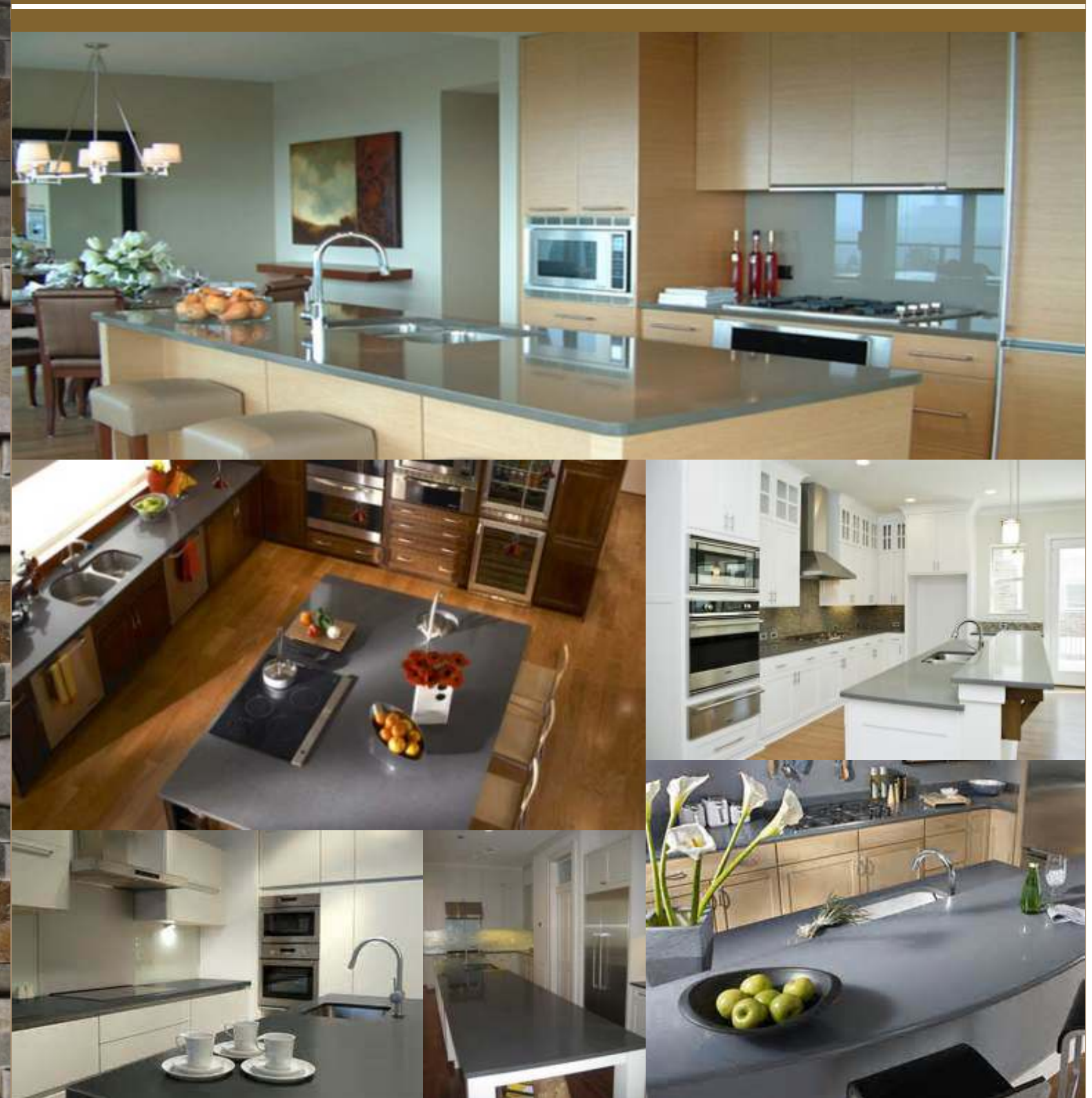
Sand Stone

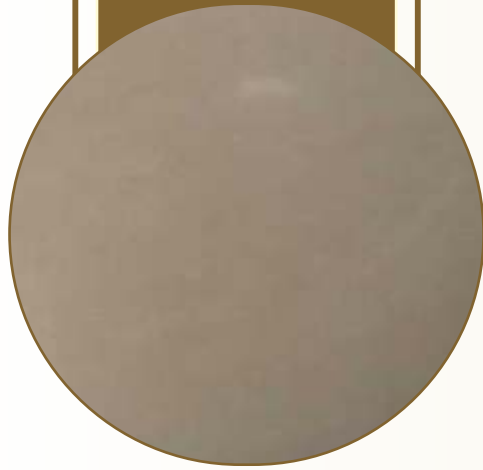


Quartzite

Product Overview

- ◆ COBBLES
loose / crated
- ◆ SLABS
natural surface & edges hand - cut, vein cut, surface sandblasted & bottom calibrated all sides sawn & surface polished surface brushed , flamed , shot blasted & honed tumbled bull nosed , clambering
- ◆ PALISADES
Wallstones
- ◆ KERBS
chamfering by hand or machine
- ◆ CRAZY PAVING
polygonal slabs with 2 - 5 pcs per sqm.
- ◆ GARDEN / DECORATIVE ARTICLES

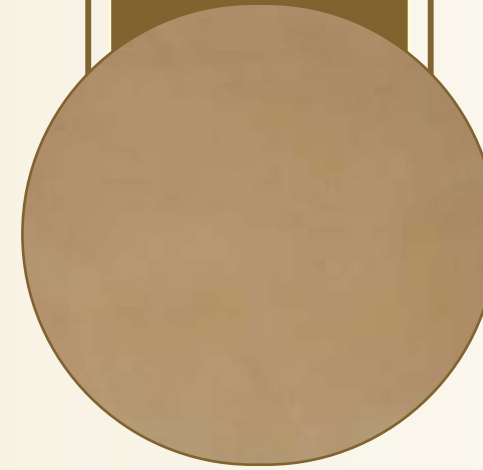




Brown

The word "granite" comes from the Latin granum, a grain, in reference to the coarse-grained structure of such a holocrystalline rock. The term 'granite' also applies to a group of intrusive igneous rocks with similar textures and slight variations on composition and origin. These rocks mainly consist of feldspar, quartz, mica, and amphibole minerals. These form interlocking somewhat equigranular matrix of feldspar and quartz with scattered darker biotite mica and amphibole (often hornblende) peppering the lighter color minerals.

more info please log on : www.taroshimpex.com

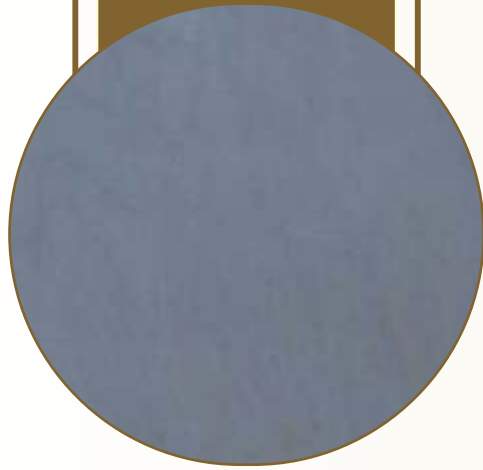


Golden

The word "granite" comes from the Latin granum, a grain, in reference to the coarse-grained structure of such a holocrystalline rock. The term 'granite' also applies to a group of intrusive igneous rocks with similar textures and slight variations on composition and origin. These rocks mainly consist of feldspar, quartz, mica, and amphibole minerals. These form interlocking somewhat equigranular matrix of feldspar and quartz with scattered darker biotite mica and amphibole (often hornblende) peppering the lighter color minerals.

more info please log on : www.taroshimpex.com

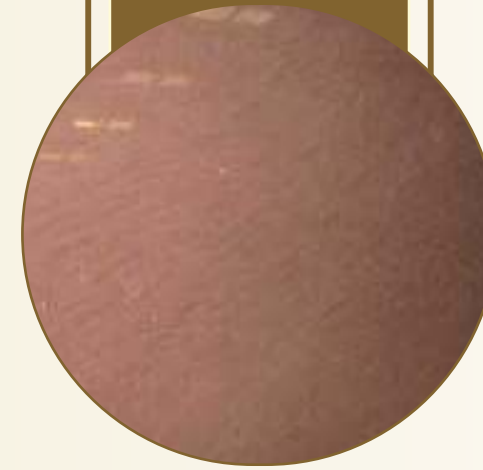




Grey

The word "granite" comes from the Latin granum, a grain, in reference to the coarse-grained structure of such a holocrystalline rock. The term 'granite' also applies to a group of intrusive igneous rocks with similar textures and slight variations on composition and origin. These rocks mainly consist of feldspar, quartz, mica, and amphibole minerals. These form interlocking somewhat equigranular matrix of feldspar and quartz with scattered darker biotite mica and amphibole (often hornblende) peppering the lighter color minerals.

more info please log on : www.taroshimpex.com



Red Brown

The word "granite" comes from the Latin granum, a grain, in reference to the coarse-grained structure of such a holocrystalline rock. The term 'granite' also applies to a group of intrusive igneous rocks with similar textures and slight variations on composition and origin. These rocks mainly consist of feldspar, quartz, mica, and amphibole minerals. These form interlocking somewhat equigranular matrix of feldspar and quartz with scattered darker biotite mica and amphibole (often hornblende) peppering the lighter color minerals.

more info please log on : www.taroshimpex.com



Granite

Product Overview

- ◆ COBBLES
loose / crated
- ◆ SLABS
natural surface & edges hand - cut, vein cut, surface sandblasted & bottom calibrated all sides sawn & surface polished surface brushed , flamed , shot blasted & honed tumbled bull nosed , clambering
- ◆ PALISADES
Wallstones
- ◆ KERBS
chamfering by hand or machine
- ◆ CRAZY PAVING
polygonal slabs with 2 - 5 pcs per sqm.
- ◆ GARDEN / DECORATIVE ARTICLES

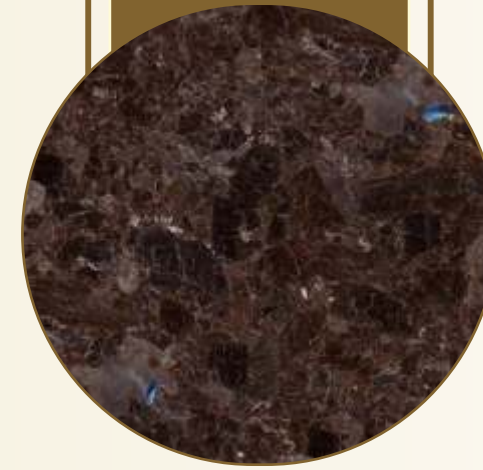




Black Granite

The word "granite" comes from the Latin granum, a grain, in reference to the coarse-grained structure of such a holocrystalline rock. The term 'granite' also applies to a group of intrusive igneous rocks with similar textures and slight variations on composition and origin. These rocks mainly consist of feldspar, quartz, mica, and amphibole minerals. These form interlocking somewhat equigranular matrix of feldspar and quartz with scattered darker biotite mica and amphibole (often hornblende) peppering the lighter color minerals.

more info please log on : www.taroshimpex.com



Brown Granite

The word "granite" comes from the Latin granum, a grain, in reference to the coarse-grained structure of such a holocrystalline rock. The term 'granite' also applies to a group of intrusive igneous rocks with similar textures and slight variations on composition and origin. These rocks mainly consist of feldspar, quartz, mica, and amphibole minerals. These form interlocking somewhat equigranular matrix of feldspar and quartz with scattered darker biotite mica and amphibole (often hornblende) peppering the lighter color minerals.

more info please log on : www.taroshimpex.com





Coffee Granite

The word "granite" comes from the Latin granum, a grain, in reference to the coarse-grained structure of such a holocrystalline rock. The term 'granite' also applies to a group of intrusive igneous rocks with similar textures and slight variations on composition and origin. These rocks mainly consist of feldspar, quartz, mica, and amphibole minerals. These form interlocking somewhat equigranular matrix of feldspar and quartz with scattered darker biotite mica and amphibole (often hornblende) peppering the lighter color minerals.

more info please log on : www.taroshimpex.com

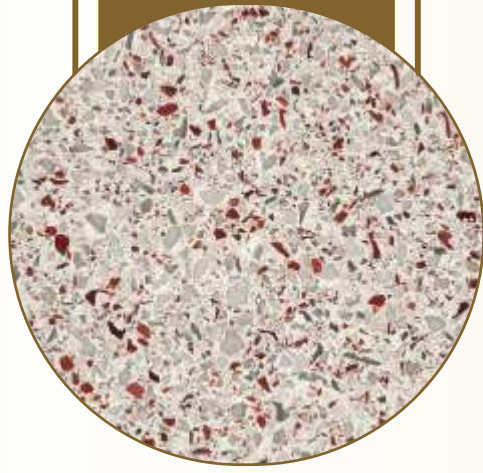


Copper Granite

The word "granite" comes from the Latin granum, a grain, in reference to the coarse-grained structure of such a holocrystalline rock. The term 'granite' also applies to a group of intrusive igneous rocks with similar textures and slight variations on composition and origin. These rocks mainly consist of feldspar, quartz, mica, and amphibole minerals. These form interlocking somewhat equigranular matrix of feldspar and quartz with scattered darker biotite mica and amphibole (often hornblende) peppering the lighter color minerals.

more info please log on : www.taroshimpex.com

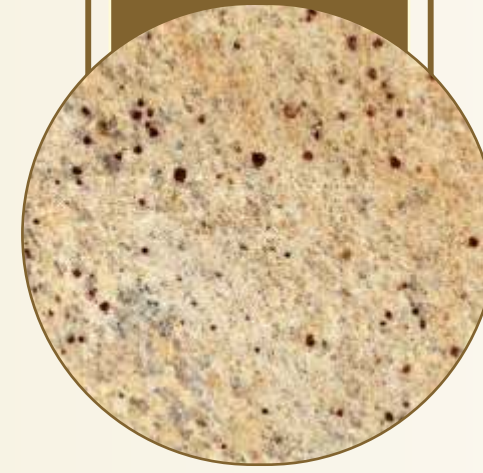




Copper White Granite

The word "granite" comes from the Latin granum, a grain, in reference to the coarse-grained structure of such a holocrystalline rock. The term 'granite' also applies to a group of intrusive igneous rocks with similar textures and slight variations on composition and origin. These rocks mainly consist of feldspar, quartz, mica, and amphibole minerals. These form interlocking somewhat equigranular matrix of feldspar and quartz with scattered darker biotite mica and amphibole (often hornblende) peppering the lighter color minerals.

more info please log on : www.taroshimpex.com

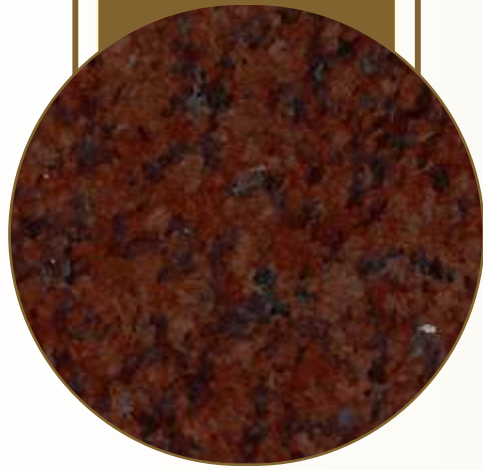


Kashmir Gold White Granite

The word "granite" comes from the Latin granum, a grain, in reference to the coarse-grained structure of such a holocrystalline rock. The term 'granite' also applies to a group of intrusive igneous rocks with similar textures and slight variations on composition and origin. These rocks mainly consist of feldspar, quartz, mica, and amphibole minerals. These form interlocking somewhat equigranular matrix of feldspar and quartz with scattered darker biotite mica and amphibole (often hornblende) peppering the lighter color minerals.

more info please log on : www.taroshimpex.com





Red Granite

The word "granite" comes from the Latin granum, a grain, in reference to the coarse-grained structure of such a holocrystalline rock. The term 'granite' also applies to a group of intrusive igneous rocks with similar textures and slight variations on composition and origin. These rocks mainly consist of feldspar, quartz, mica, and amphibole minerals. These form interlocking somewhat equigranular matrix of feldspar and quartz with scattered darker biotite mica and amphibole (often hornblende) peppering the lighter color minerals.

more info please log on : www.taroshimpex.com



Sapphire Blue Granite

The word "granite" comes from the Latin granum, a grain, in reference to the coarse-grained structure of such a holocrystalline rock. The term 'granite' also applies to a group of intrusive igneous rocks with similar textures and slight variations on composition and origin. These rocks mainly consist of feldspar, quartz, mica, and amphibole minerals. These form interlocking somewhat equigranular matrix of feldspar and quartz with scattered darker biotite mica and amphibole (often hornblende) peppering the lighter color minerals.

more info please log on : www.taroshimpex.com





Rose Pearl

The word "granite" comes from the Latin granum, a grain, in reference to the coarse-grained structure of such a holocrystalline rock. The term 'granite' also applies to a group of intrusive igneous rocks with similar textures and slight variations on composition and origin. These rocks mainly consist of feldspar, quartz, mica, and amphibole minerals. These form interlocking somewhat equigranular matrix of feldspar and quartz with scattered darker biotite mica and amphibole (often hornblende) peppering the lighter color minerals.

more info please log on : www.taroshimpex.com



Tiger White

The word "granite" comes from the Latin granum, a grain, in reference to the coarse-grained structure of such a holocrystalline rock. The term 'granite' also applies to a group of intrusive igneous rocks with similar textures and slight variations on composition and origin. These rocks mainly consist of feldspar, quartz, mica, and amphibole minerals. These form interlocking somewhat equigranular matrix of feldspar and quartz with scattered darker biotite mica and amphibole (often hornblende) peppering the lighter color minerals.

more info please log on : www.taroshimpex.com





Product Overview

- ◆ COBBLES
loose / crated
- ◆ SLABS
natural surface & edges hand - cut, vein cut, surface sandblasted & bottom calibrated all sides sawn & surface polished surface brushed , flamed , shot blasted & honed tumbled bull nosed , clambering
- ◆ PALISADES
Wallstones
- ◆ KERBS
chamfering by hand or machine
- ◆ CRAZY PAVING
polygonal slabs with 2 - 5 pcs per sqm.
- ◆ GARDEN / DECORATIVE ARTICLES

Marble

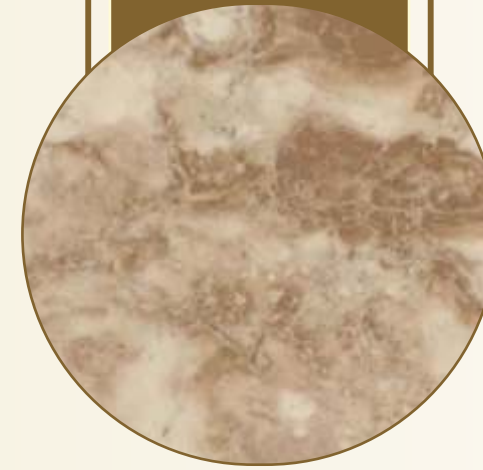




Botticino

In Botticino Marble color tones and pencil-thin veins will vary between large tile jobs, multiples tiles should be viewed from multiple pallets to verify current coloration. It is a common characteristic for this stone to have voids in the raw material. Before it reaches the polishing stages, these voids are filled with a polyester resin. Depending on how deep the void is, the resin may shrink as it dries, which will leave the surface of the filled area slightly lower than the rest. This does not affect the durability, maintenance or beauty of the stone.

more info please log on : www.taroshimpex.com



Cappuccino

In Cappuccino Marble color tones and pencil-thin veins will vary between large tile jobs, multiples tiles should be viewed from multiple pallets to verify current coloration. It is a common characteristic for this stone to have voids in the raw material. Before it reaches the polishing stages, these voids are filled with a polyester resin. Depending on how deep the void is, the resin may shrink as it dries, which will leave the surface of the filled area slightly lower than the rest. This does not affect the durability, maintenance or beauty of the stone.

more info please log on : www.taroshimpex.com

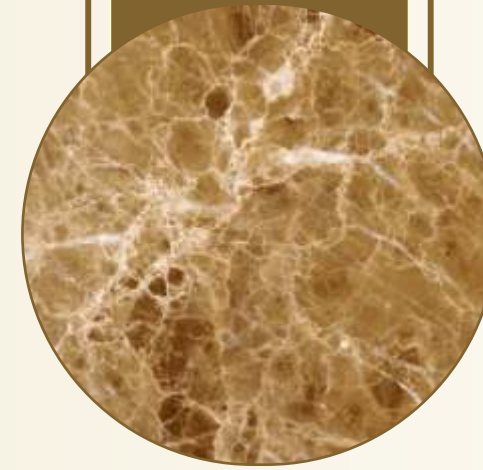




Dark Emperador

In Dark Emperador color tones and pencil-thin veins will vary between large tile jobs, multiples tiles should be viewed from multiple pallets to verify current coloration. It is a common characteristic for this stone to have voids in the raw material. Before it reaches the polishing stages, these voids are filled with a polyester resin. Depending on how deep the void is, the resin may shrink as it dries, which will leave the surface of the filled area slightly lower than the rest. This does not affect the durability, maintenance or beauty of the stone.

more info please log on : www.taroshimpex.com

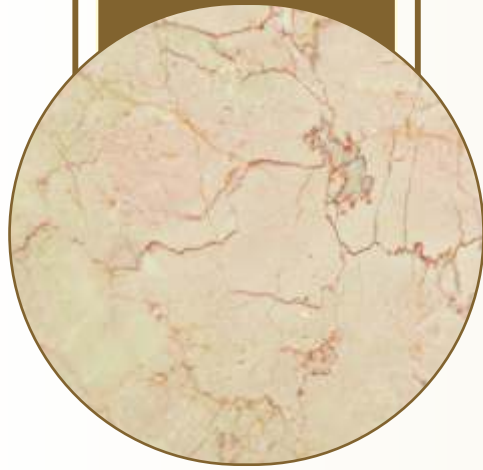


Light Emperador

In Light Emperador color tones and pencil-thin veins will vary between large tile jobs, multiples tiles should be viewed from multiple pallets to verify current coloration. It is a common characteristic for this stone to have voids in the raw material. Before it reaches the polishing stages, these voids are filled with a polyester resin. Depending on how deep the void is, the resin may shrink as it dries, which will leave the surface of the filled area slightly lower than the rest. This does not affect the durability, maintenance or beauty of the stone.

more info please log on : www.taroshimpex.com





Rosalia Marble

In Rosalia Marble color tones and pencil-thin veins will vary between large tile jobs, multiples tiles should be viewed from multiple pallets to verify current coloration. It is a common characteristic for this stone to have voids in the raw material. Before it reaches the polishing stages, these voids are filled with a polyester resin. Depending on how deep the void is, the resin may shrink as it dries, which will leave the surface of the filled area slightly lower than the rest. This does not affect the durability, maintenance or beauty of the stone.

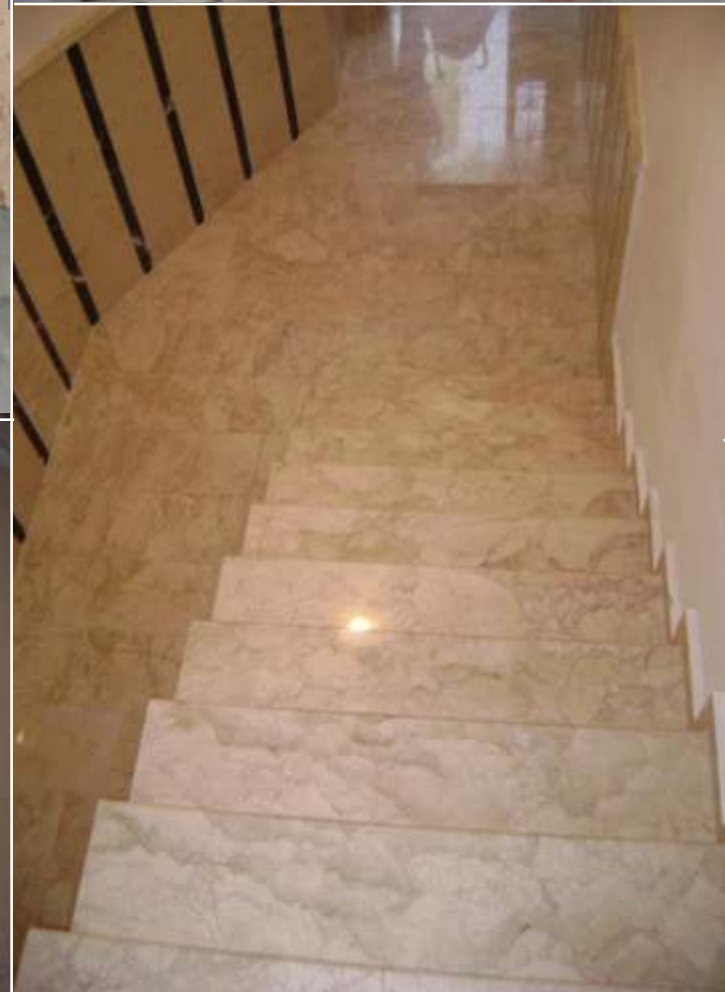
more info please log on : www.taroshimpex.com



Toronto Marble

In Toronto Marble color tones and pencil-thin veins will vary between large tile jobs, multiples tiles should be viewed from multiple pallets to verify current coloration. It is a common characteristic for this stone to have voids in the raw material. Before it reaches the polishing stages, these voids are filled with a polyester resin. Depending on how deep the void is, the resin may shrink as it dries, which will leave the surface of the filled area slightly lower than the rest. This does not affect the durability, maintenance or beauty of the stone.

more info please log on : www.taroshimpex.com





White

In White Marble color tones and pencil-thin veins will vary between large tile jobs, multiples tiles should be viewed from multiple pallets to verify current coloration. It is a common characteristic for this stone to have voids in the raw material. Before it reaches the polishing stages, these voids are filled with a polyester resin. Depending on how deep the void is, the resin may shrink as it dries, which will leave the surface of the filled area slightly lower than the rest. This does not affect the durability, maintenance or beauty of the stone.

more info please log on : www.taroshimpex.com



Beige Marble

In Beige Marble color tones and pencil-thin veins will vary between large tile jobs, multiples tiles should be viewed from multiple pallets to verify current coloration. It is a common characteristic for this stone to have voids in the raw material. Before it reaches the polishing stages, these voids are filled with a polyester resin. Depending on how deep the void is, the resin may shrink as it dries, which will leave the surface of the filled area slightly lower than the rest. This does not affect the durability, maintenance or beauty of the stone.

more info please log on : www.taroshimpex.com





Calcutta

In Calcutta Marble color tones and pencil-thin veins will vary between large tile jobs, multiples tiles should be viewed from multiple pallets to verify current coloration. It is a common characteristic for this stone to have voids in the raw material. Before it reaches the polishing stages, these voids are filled with a polyester resin. Depending on how deep the void is, the resin may shrink as it dries, which will leave the surface of the filled area slightly lower than the rest. This does not affect the durability, maintenance or beauty of the stone.

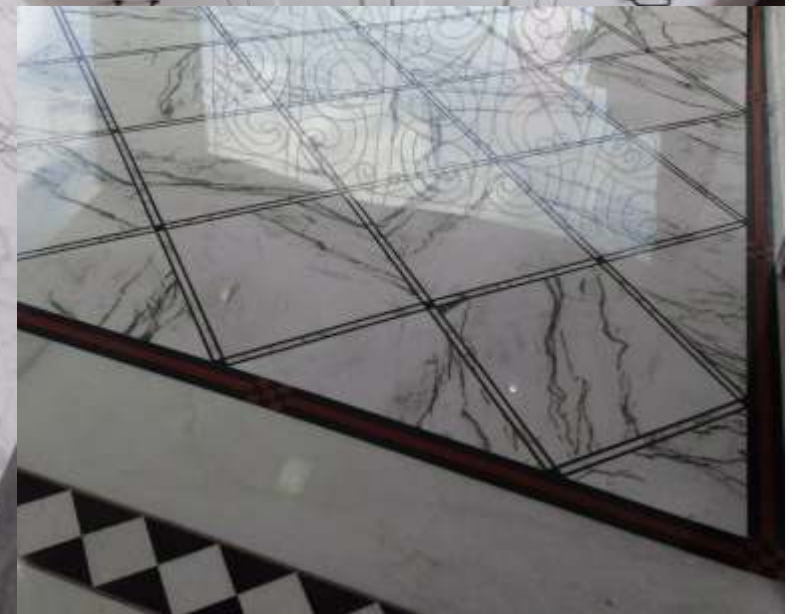
more info please log on : www.taroshimpex.com



Statuario

In Statuario Marble color tones and pencil-thin veins will vary between large tile jobs, multiples tiles should be viewed from multiple pallets to verify current coloration. It is a common characteristic for this stone to have voids in the raw material. Before it reaches the polishing stages, these voids are filled with a polyester resin. Depending on how deep the void is, the resin may shrink as it dries, which will leave the surface of the filled area slightly lower than the rest. This does not affect the durability, maintenance or beauty of the stone.

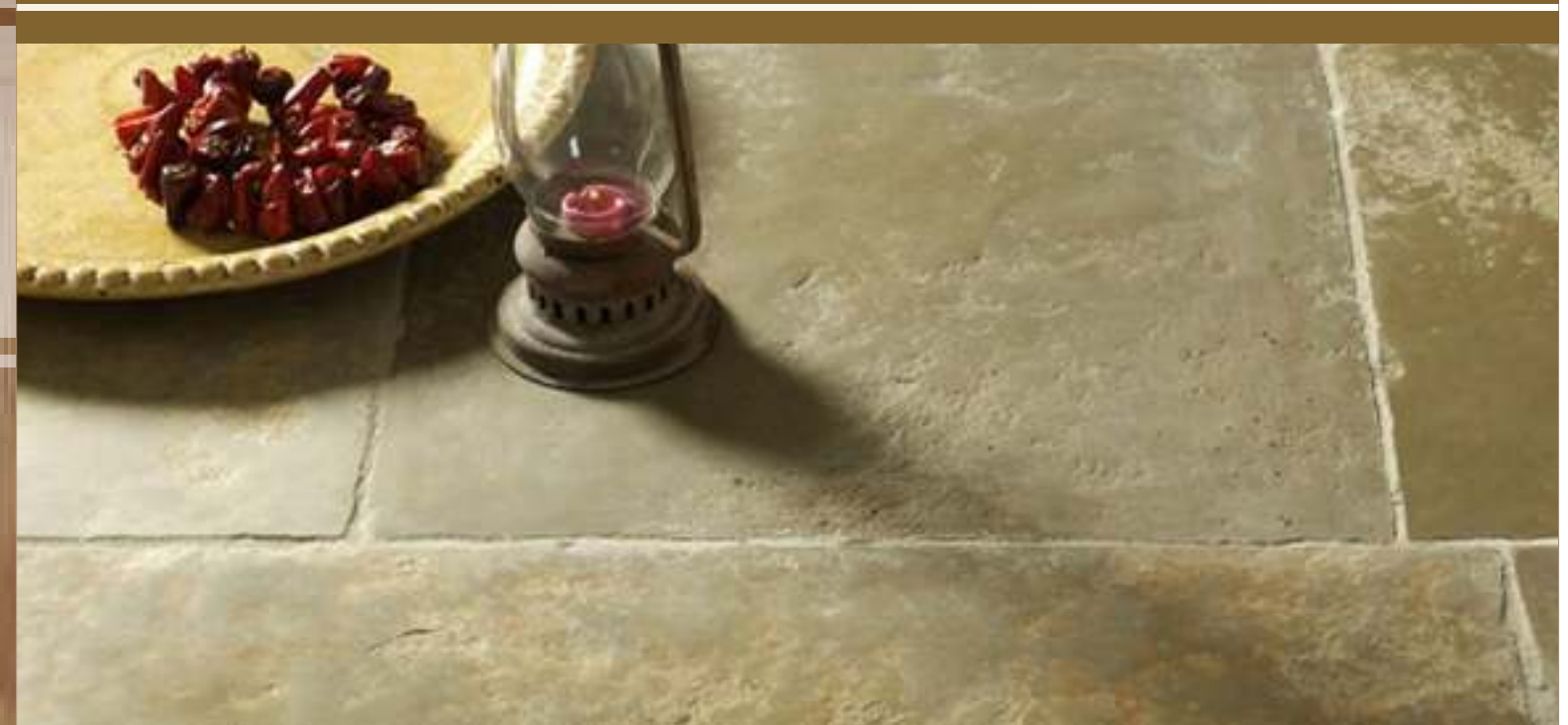
more info please log on : www.taroshimpex.com



Travertine

Product Overview

- ◆ COBBLES
loose / crated
- ◆ SLABS
natural surface & edges hand - cut, vein cut, surface sandblasted & bottom calibrated all sides sawn & surface polished surface brushed , flamed , shot blasted & honed tumbled bull nosed , clambering
- ◆ PALISADES
Wallstones
- ◆ KERBS
chamfering by hand or machine
- ◆ CRAZY PAVING
polygonal slabs with 2 - 5 pcs per sqm.
- ◆ GARDEN / DECORATIVE ARTICLES

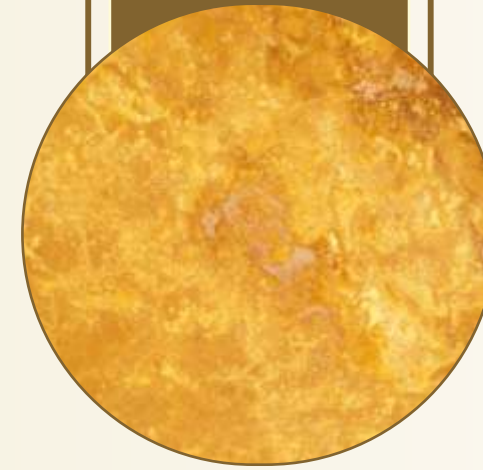




Classic Travertine

Classic Travertine tiles are a durable material that can be used for both interior and exterior applications. Classic Travertine tiles are available in both Unfilled & Honed, Filled & Honed and Tumbled formats.

more info please log on : www.taroshimpex.com



Gold Travertine

Gold Travertine is a beautiful dark mahogany travertine, and is the most sumptuous of finishes. It is cut in such a way as to accentuate the natural linear markings within the stone. And therefore there appears to be horizontal lines present.

more info please log on : www.taroshimpex.com

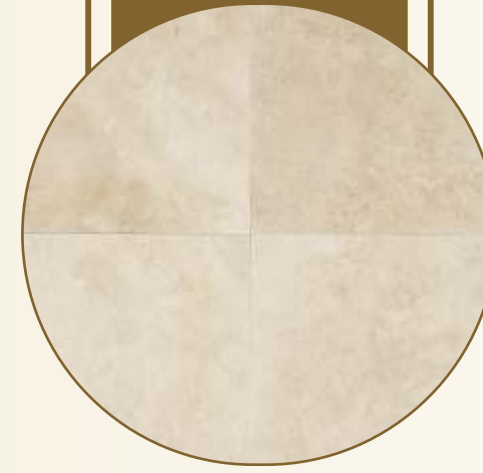




Ivory Travertine

Very LIGHT, Dense travertine requiring little fill. Can be used indoors and outdoors. Especially suited for patinated and bevelled / chiseled edge multisize sets and pavers, best use is for honed and unfilled outdoor paving applications, pool copings

more info please log on : www.taroshimpex.com



Light Travertine

LIGHT Travertine is a beautiful light travertine honed and filled. Travertine tiles are much easier to maintain than many would have you believe.

more info please log on : www.taroshimpex.com





Medium Travertine

Medium LIGHT Travertine is a beautiful Bronze look. It is high quality and will give the highest of finishes for any development.

more info please log on : www.taroshimpex.com



Silver Travertine

Silver Travertine is a grey travertine cut across the grain. It is a very contemporary colour with a hint of cream within the smokey grey blue.

more info please log on : www.taroshimpex.com





Product Overview

- ◆ COBBLES
loose / crated
- ◆ SLABS
natural surface & edges hand - cut, vein cut, surface sandblasted & bottom calibrated all sides sawn & surface polished surface brushed , flamed , shot blasted & honed tumbled bull nosed , clambering
- ◆ PALISADES
Wallstones
- ◆ KERBS
chamfering by hand or machine
- ◆ CRAZY PAVING
polygonal slabs with 2 - 5 pcs per sqm.
- ◆ GARDEN / DECORATIVE ARTICLES

Limestone

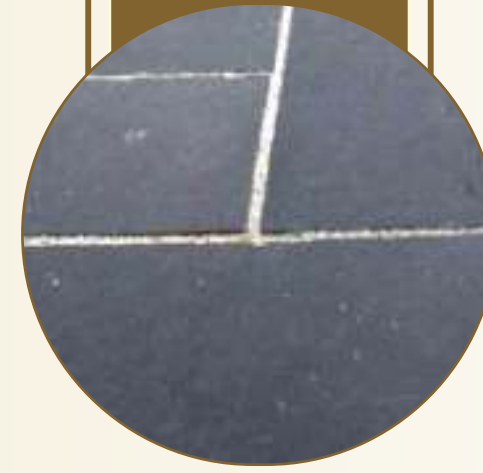




Golden Limestone

Golden Limestone is an attractive and very durable paving which has a softer surface than sandstone and features a variable, soft riven texture in its finish. Limestone has meticulous surface, which is best suited on the exterior of the buildings. The limestone manufactured by us is resistive against adverse climate conditions.

more info please log on : www.taroshimpex.com



Black Limestone

Black Limestone is an attractive and very durable paving which has a softer surface than sandstone and features a variable, soft riven texture in its finish. Limestone has meticulous surface, which is best suited on the exterior of the buildings. The limestone manufactured by us is resistive against adverse climate conditions.

more info please log on : www.taroshimpex.com

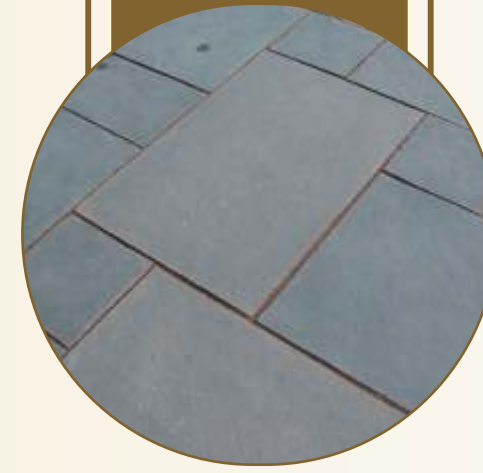




Brown Limestone

Brown Limestone is an attractive and very durable paving which has a softer surface than sandstone and features a variable, soft riven texture in its finish. Limestone has a meticulous surface, which is best suited on the exterior of the buildings. The limestone manufactured by us is resistant against adverse climate conditions.

more info please log on : www.taroshimpex.com



Blue Limestone

Blue Limestone is an attractive and very durable paving which has a softer surface than sandstone and features a variable, soft riven texture in its finish. Limestone has a meticulous surface, which is best suited on the exterior of the buildings. The limestone manufactured by us is resistant against adverse climate conditions.

more info please log on : www.taroshimpex.com





www.taroshimpex.com

